

# Thank you to our 2015–16 Guidebook advertisers

## Advertiser Index

---

47	Amy Hiestand Consulting
45	Anne Phillips Architecture
46	Arnie Fischman Housing & Community Development Consulting
46	Barbara Sanders & Associates
40	Bay Area Community Services (BACS)
37	Bay Area Housing People
40	Bay Area LISC
42	BBI Construction
42	Beacon Communities
45	Bonnewit Development Services
46	boonachepresents
32	Branagh Construction
41	BRIDGE Housing
43	Building and Construction Trades Council of Alameda County
43	Byrens Kim Design Works
40	Cahill Contractors, Inc.
44	CCraig Consulting
37	Charles Schwab Bank
34	Christian Church Homes (CCH)
38	City of Oakland—Housing and Community Development Department
36	Clearinghouse CDFI
26	Community Economics, Inc.
45	Contra Costa Interfaith Housing

---

38	D&H Construction
45	Dealey, Renton & Associates
39	EAH Housing
18	East Bay Asian Local Development Corporation (EBALDC)
46	East Bay Community Recovery Project
35	Eden Housing
41	Gefland Partners Architects
41	Gonzales Architects
41	Gubb & Barshay, LLP
39	Habitat for Humanity East Bay/Silicon Valley
44	Housing Authority of the City of Alameda
46	Housing Consortium of the East Bay (HCEB)
47	The Interfaith Peace Project
40	J.H. Fitzmaurice, Inc.
35	KTGY Group, Inc.
39	Lindquist, Von Husen & Joyce, LLP
47	Low Income Investment Fund (LIIF)
34	MidPen Housing
45	MWA Architects
44	North American Title Company
23	Northern California Carpenters Regional Council
36	Oakland Housing Authority
44	Okamoto Saijo Architects
47	Promise Energy
45	Public Interest Law Project
43	Pyatok Architects, Inc.
42	Resources for Community Development (RCD)
47	Satellite Affordable Housing Associates (SAHA)
46	Sean Heron
39	Segue Construction, Inc.
42	Silicon Valley Bank
43	Sun Light & Power
44	Van Meter Williams Pollack, LLP
44	William Pettus, Architect



At CCH, we build and manage affordable housing where seniors live and thrive in the comfort of their own homes.

We believe doing so is better for communities and the seniors we serve.

**Christian Church Homes**  
 303 Hegenberger Road, Suite 201  
 Oakland, CA 94621  
 PHONE 510-632-6712  
 FAX 510-632-6755  
 WEB [www.cchnc.org](http://www.cchnc.org)



Since 1970, MidPen Housing has developed over 100 affordable communities across eleven California counties. Our award-winning communities benefit thousands of residents and help revitalize neighborhoods.

Thank you, EBHO, for your continued support of vibrant, affordable communities like these!

**MidPen HOUSING**  
[www.midpen-housing.org](http://www.midpen-housing.org)

*Station Center in Union City,  
 winner of the Congress for the New Urbanism 2014 Charter Awards Grand Prize*



Monteverde Senior Apartments in Orinda, CA  
67 Senior Affordable Units



Changing Lives  
Changing Communities

[www.edenhousing.org](http://www.edenhousing.org)



3706 San Pablo Avenue  
EAH  
Emeryville, CA

As a leader in the design of affordable housing, KTGY's experience sweeps the entire spectrum of accommodations for those with incomes below the median. From developments for seniors and work force housing to subsidized communities, KTGY understands financing strategies, agency requirements, and specific design needs for these groups. The goal is always the same - to create a HOME.

## PRESENTING OUR OAKLAND OFFICE

LOCATED IN BEAUTIFUL JACK LONDON SQUARE

Architecture + Planning  
580 Second Street, Suite 200  
Oakland, CA 94607  
510-272-2910  
[ktgy.com](http://ktgy.com)



IRVINE

SANTA MONICA

OAKLAND

DENVER

TYSONS



## Long Term, Fixed-Rate Financing for Affordable Multi-Family Housing



### WE PROVIDE: LOANS UP TO \$5 MILLION

- Bridge Loans
  - Construction Loans
  - Operations Expansion
  - Permanent Loans
  - Construction to Permanent Loans
- (Fixed Rate up to 27 Years, Fully Amortizing)

Clearinghouse CDFI is a full service direct lender. We bridge the financing gap between conventional lending standards and the needs of low-income and distressed communities.

**WWW.CLEARINGHOUSECDFI.COM**

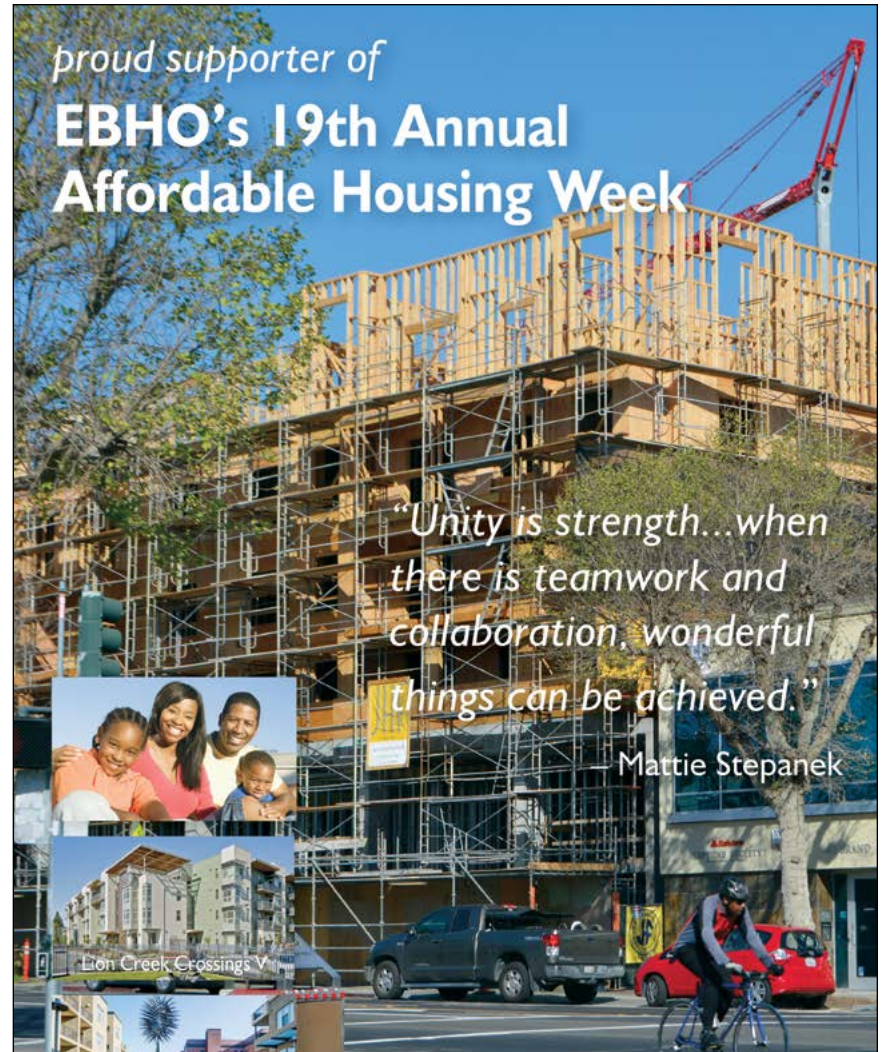
**(510) 557-5077**



Community Development Financial Institution

© Copyright 2015 All Rights Reserved. Department of Corporations  
Finance Lender License #6035497 CA, #C20111025-1584 NV.

## proud supporter of EBHO's 19th Annual Affordable Housing Week



Oakland Housing  
Authority

**www.oakha.org**

Kerry Abbott  
Natalie Bonnewit  
Kate Bristol  
Cathy Craig  
Katharine Gale  
Debbie Raucher

Announce the launch of

[bahousingpeople.com](http://bahousingpeople.com)

Bay Area Housing People is a consortium of independent consultants offering housing and homeless related services to non-profit organizations, local governments, and regional collaboratives.



*charles* **SCHWAB**  
**BANK**

We are proud to support East Bay  
Housing Organizations' annual  
Affordable Housing Week!



©2013 Charles Schwab Bank.  
All rights reserved. Member FDIC.  
CS18906-01 (0313-2034) ADP44830-03 (03/13)

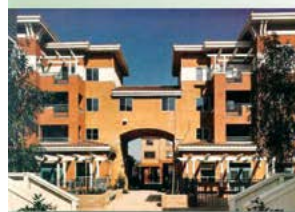




*Revitalizing your community*



*www.dh-construction.com*  
*info@dh-comstruction.com*  
 510.237.7883



## The Housing & Community Development Division assists Oakland residents and neighborhoods by:

- Financing development of affordable housing – both to provide better housing opportunities and to revitalize neighborhoods throughout the city.
- Stabilizing rents and improving opportunities for home ownership.
- Providing a variety of community services and facilities for low and moderate income Oakland residents.

To learn more about our services, please visit:

[www.oaklandnet.com/hcd](http://www.oaklandnet.com/hcd)



## CITY OF OAKLAND

COMMUNITY & ECONOMIC DEVELOPMENT AGENCY  
 250 Frank H. Ogawa Plaza, Suite 5313  
 Oakland, CA 94612  
 510.238.3015





Creating affordable homeownership opportunities.  
Building environmentally sustainable homes.  
Revitalizing neighborhoods. Changing lives.

 **Habitat for Humanity®** 866.450.4432 // [HabitatEBSV.org](http://HabitatEBSV.org)  
East Bay/Silicon Valley

*Transit oriented, urban infill, mixed use development*



**3706 San Pablo, Emeryville**

**[www.EAHHousing.org](http://www.EAHHousing.org)**  
Find us on Facebook and Twitter



**A HOME CHANGES LIVES.**

OUR COMMITMENT ENDURES.



CPAs with industry expertise  
proudly supporting EBHO's  
2015 Affordable Housing Week

**415-957-9999 [www.lvjh.com](http://www.lvjh.com)**



INTEGRITY  
COMMITMENT  
TEAMWORK

**LINDQUIST, VON HUSEN & JOYCE LLP**  
Certified Public Accountants

**Your Partner in Affordable Housing**



**7139 Koll Center Parkway, Suite 200**  
**Pleasanton, CA 94566**  
**925-931-1750 | [seguecon.com](http://seguecon.com)**







**J.H. FITZMAURICE, INC.**  
GENERAL CONTRACTORS  
*Proud Sponsors of*  
**E.B.H.O.**



**Bay Area LISC Congratulates  
EBHO on 31 Years of  
Affordable Housing Advocacy**

**LISC**  
Bay Area

[www.bayarealisc.org](http://www.bayarealisc.org)



**BACS**  
Bay Area Community Services

*Locations throughout  
the Bay Area*  
[www.bayareacs.org](http://www.bayareacs.org)  
510-613-0330

*Housing  
Solutions*



*Aging with  
Independence*



*Modernizing  
Mental Health*





**CAHILL**

BUILDING HOUSING WITH SKILL & INTEGRITY FOR OVER 100 YEARS &  
A PROUD SUPPORTER OF EBHO'S AFFORDABLE HOUSING WEEK



A few of Cahill Contractor's recent East Bay housing projects. Left to right: California Hotel Rehabilitation, Oakland; Keller Plaza Apartments, Oakland; Tassafaronga Village, exteriors, Oakland.

**AN OAKLAND LOCAL BUSINESS ENTERPRISE**

**cahill-sf.com**

**OAKLAND** (510) 250-8500 | **SAN FRANCISCO** (415) 986-0600





We measure our success by the difference we make in people's lives.



WWW.BRIDGEHOUSING.COM



**Gelfand Partners**  
ARCHITECTS

Affordable Housing • Sustainable Design  
165 10th Street, Suite 100, San Francisco, CA 94103  
415-346-4040 • www.gelfand-partners.com

**Gubb & Barshay LLP**  
ATTORNEYS AT LAW

Natalie Gubb  
Leslie Trutner

Scott Barshay  
Nicole Kline

505 14th Street, Suite 1050  
Oakland, CA 94612

Tel. 415-781-6600 • FAX 415-781-6967



Ore-Wall City, South Chicago, IL: 500 units of social housing, program space, and public space



MB7, San Francisco, CA: 200 units of affordable rental housing, community space, & retail



Meadows Court, Vacaville, CA: 80 units of affordable rental housing and community space

**Gonzales Architects**

t: 415.776.8065 | www.gonzalesarchitects.com

GA is a community based architectural and urban design firm focused on social, economical, and environmental sustainability, where we endeavor to empower those in greatest need through design. We believe that good design can effect positive change, creating spaces for living thereby fostering happy, healthy cities. We support EBHO in their continuing mission to house the people that make our community

## CONGRATULATIONS TO EBHO ON 30 YEARS *of Affordable Housing Advocacy*



BUILDING WITH PURPOSE  
*40 years and counting*



Resources for  
Community  
Development

*Affordable Housing Reimagined*



We respond to the context in each community, with appropriate design, quality construction, and professional management to provide housing choices for families, seniors, and people with special needs.

2220 Oxford Street • Berkeley, CA 94704  
(510) 841-4410 • FAX (510) 548-3502

[WWW.RCDHOUSING.ORG](http://WWW.RCDHOUSING.ORG)



Silicon Valley Bank  
Make next happen now.™

## We're proud to sponsor tomorrow, today.

Silicon Valley Bank is proud to support **EBHO**.  
EBHO promotes sustainable housing, providing services and amenities for seniors, working families and those with special needs and disabilities in East Bay communities.

Contact: Fiona Hsu, Manager Community Development Finance  
555 Mission Street, Suite 900 San Francisco, California 94105, T 415 764 3125 fhsu@svb.com

# BEACON COMMUNITIES

AN ABHOW COMPANY

At Beacon Communities, we're intentional about articulating our values and aspirations.

[www.BeaconCommunities.org](http://www.BeaconCommunities.org)

6120 Stoneridge Mall Road, Suite 300 | Pleasanton | CA 94588 | (925) 924-7100





The Building & Construction Trades Council of Alameda County is proud to support EBHO in its work to build inclusive communities.



**PYATOK**  
architecture + urban design

people building

1611 Telegraph Avenue, Suite 200 Oakland, CA 94612 / T: 510 465 7010 / [www.pyatok.com](http://www.pyatok.com)



**SUN  
LIGHT &  
POWER**

SAHA wanted to minimize ongoing operational costs by going solar with Sun Light & Power.

Your trusted solar experts since 1976.



Lakeside Senior Housing - Oakland, CA

[www.sunlightandpower.com](http://www.sunlightandpower.com)



800.233.4SUN  
1035 Folger Ave  
Berkeley, CA  
Lic #326203



**OKAMOTO SAIJO**  
ARCHITECTURE


San Francisco, CA 415 / 788-2118  
Oakland, CA 510 / 967-1403  
[www.os-architecture.com](http://www.os-architecture.com)

**Cathy Craig**  
Nonprofit Management and Program Development Consultant


*Congratulations to Jeff and all the honorees,  
and thank you EBHO for 29 years of advocacy!*

1578 Excelsior Avenue  
Oakland, CA 94602


[cathy@ccraig.com](mailto:cathy@ccraig.com)  
510-350-6448



**Housing  
Authority of the City of Alameda**  
and the City of Alameda Proudly  
Celebrate Affordable Housing Week



For more Info., 510-747-4300 or online  
[www.alamedahsg.org](http://www.alamedahsg.org)



**William Pettus, Architect LEED AP**  
**Architecture and Project Management**  
*Specializing in Commercial & Housing Rehab,  
and Tenant Improvements for Non-Profits*

---

1212 Parker Street, Berkeley, CA 94702  
Tel: 510-506-0008  
[williepettusarchitect@gmail.com](mailto:williepettusarchitect@gmail.com)

ARCHITECTURE URBAN DESIGN [www.vmwp.com](http://www.vmwp.com)

DENVER  
SAN FRANCISCO

**VAN METER  
WILLIAMS  
POLLACK LLP**



**SUZANNE H. SMITH**  
Vice President  
Managing Escrow Officer, CSEO  
NORTH AMERICAN TITLE COMPANY

21060 Redwood Road Suite 110  
Castro Valley CA 94546

t: 510.537.8300  
f: 510.537.0928  
e: [ssmith@nat.com](mailto:ssmith@nat.com)





*A Blueprint for Stability*



**DEALEY, RENTON & ASSOCIATES**  
**Insurance Brokers**  
*...Since 1950*

*Oakland      Pasadena      Santa Ana*

***www.dealeyrenton.com*** License # 0020739




**Creating Thriving Communities**  
 Anne Phillips Architecture 510-841-7056



Contra Costa Interfaith Housing provides permanent, affordable housing and on-site supportive services that help more than 800 formerly homeless and low-income residents achieve stability and self-reliance.

3164 Putnam Blvd., Suite C  
 Walnut Creek, CA 94597

Phone: (925) 944-2244  
[www.ccinterfaithhousing.org](http://www.ccinterfaithhousing.org)



**VIVA EBHO &**  
**Palo Vista Gardens Resident Advisory Council**  
**Public Advocates**  
**Sup. Keith Carson**

**BONNEWIT** development services



natalie@bonnewit.com ♦ 510.325.3601 ♦ [www.bonnewit.com](http://www.bonnewit.com)

ARCHITECTURAL + INTERIOR DESIGN  
[mwaarchitects.com](http://mwaarchitects.com)




SAN FRANCISCO  
 OAKLAND  
 PORTLAND

*Westlake Christian Terrace East, Oakland*



**HCEB**  
HOUSING CONSORTIUM  
OF THE EAST BAY  
Creating Inclusive  
Communities

1440 BROADWAY,  
SUITE 700  
OAKLAND, CA 94612  
(510) 832-1315  
[www.hceb.org](http://www.hceb.org)




Serving Bay Area Communities Since 1989  
**EAST BAY COMMUNITY  
RECOVERY PROJECT**

- ☒ Supportive housing
- ☒ Strength-based treatment
- ☒ Residential program for  
moms and children

learn more at: [www.ebcprp.org](http://www.ebcprp.org)



Call Us: 510-446-7100

Proud Sponsor of EBHO

**ARNIE FISCHMAN**

---

**Housing and Community Development Consulting**

4061 Lakeshore Avenue  
Oakland, CA 94601

Phone: 510/763-1058  
Fax: 510/763-1058  
Arniefish@aol.com



**King County  
Housing  
Authority**

Sean Heron  
Chief of Staff

600 Andover Park W.  
Seattle, WA 98188-3326

Phone 206-826-5323  
Fax 206-574 1189  
Email [seanh@kcha.org](mailto:seanh@kcha.org)

[www.kcha.org](http://www.kcha.org)

***In Support of EBHO  
and Affordable Housing***

**Barbara Sanders and Associates**  
Affordable Housing and Community Development Consultants

PO Box 27253, Oakland, CA 94602  
Telephone: (510) 261-9509 :: Email: [barbsa9509@aol.com](mailto:barbsa9509@aol.com)



**boonache presents**  
at the heart of our work is our community's essence

co-founders  
**boona cheema & janny castillo**  
510.599.2189 510.367.1717  
[boonachepresents.com](http://boonachepresents.com)  
[boonachepresents@gmail.com](mailto:boonachepresents@gmail.com)





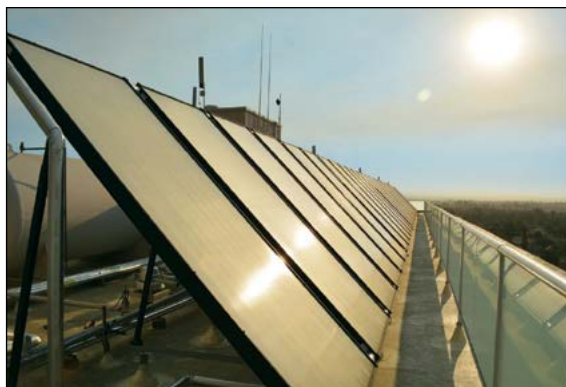


## Amy Hiestand Consulting

Tel: 925 588 4192 Email: amyh3167@yahoo.com

Affordable Housing and Community Development  
Program Design & Implementation  
Housing Policy Technical Assistance

*Celebrating EBHO and Affordable Housing Week 2015!*



**PROMISE**  
energy

**Solar Solutions for  
Affordable Housing**

Solar Hot Water  
+  
Solar PV

www.promiseenergy.com  
888.444.7911 | CSLB: 978353



**The Interfaith  
Peace Project**

**The Interfaith Peace Project**  
640 Bailey Road #301  
Pittsburg, CA 94565  
(925) 303-9879

Thomas P. Bonacci, C.P.  
Executive Director  
(925) 787-9279  
peace@thomaspbonacci.net

interfaithpeaceproject.org

**\$810 million**

invested in safe, affordable housing

**64,000 homes**

created or preserved nationwide

The **Low Investment Fund** is a national leader in providing flexible, affordable financing to develop and stabilize affordable housing. We proudly support **EBHO's** work to build vibrant, affordable communities.

50 California Street, Suite 2900  
San Francisco, CA 94111  
T: 415.772.9094 | www.liifund.org

**liif**  
capital for healthy  
families & communities

**Proud EBHO member!**

**SAHA**  
SATELLITE  
AFFORDABLE  
HOUSING  
ASSOCIATES

www.sahahomes.org  
(510) 647-0700

# EBHO's 2015 Organizational Members

Abode Services	City of Emeryville	Hello Housing	Oakland Tenants Union
adbc architecture	City of Fremont	HKIT Architects	Okamoto Saijo Architecture
Alameda County Behavioral Health Care Services	City of Oakland	Homeowner Preservation Center	Oliver & Company
Alameda County Housing & Community Development Department	City of Pleasanton Housing Division*	HomeLiberty	Palo Vista Gardens Resident Advisory Council
Alameda Home Team	City of San Leandro Community Development Department	Housing California	Partners for Community Access
Allied Housing	Community Access Supported Living & Partners ILS	Housing Authority of the County of Alameda*	Portfolio Development Partners LLC
American Lung Association in California	Community Economics, Inc.	Housing Trust of Santa Clara County	Project Sentinel
Amy Hiestand Consulting, LLC	Community Housing Development Corporation (CHDC)	Ignition Architecture	Public Advocates
Anderson and Associates	Compass, LLC	IDA Structural Engineers	PYATOK
Anka Behavioral Health, Inc.	Construction Employers' Association	International Brotherhood of Electrical Workers L.U. 302	Renewed Hope Housing Advocates
Ankrom Moisan	Contra Costa Interfaith Housing	J.H. Fitzmaurice, Inc.*	Resources for Community Development (RCD)
Anne Phillips Architecture	The Contra Costa Labor Council*	Jones Hall*	Sacramento Housing Alliance
Argus	Corporation for Supportive Housing	JRDV Urban International	Saida+ Sullivan Design Partners
ASIAN, Inc.	D&H Construction*	Kava Massih Architects	Salazar Architects, Inc.
Bank of the West*	Dahlin Group Architecture Planning	KTGY Group, Inc.	Satellite Affordable Housing Associates (SAHA)
Bay Area Community Land Trust (BACLT)	David Baker Architects*	LANDIS Development, LLC	Save Mount Diablo
Bay Area Community Services (BACS)	Dawson Electric	Las Trampas, Inc.	Segue Construction, Inc.
Bay Area LISC	Detmer Berger Architects	Luk Associates Civil Engineers	SHELTER, Inc.
BBi Construction*	Devine & Gong, Inc.	Leddy Maytum Stacy Architects	Silicon Valley Bank
Beacon Communities*	Dignity Housing West	Lindquist, von Husen & Joyce LLP	Sisters of the Holy Family
Berkeley Food and Housing Project	EAH Housing*	Low Income Investment Fund (LIIF)	St. Mary's Center
Black Alliance for Just Immigration (BAJI)	East Bay Asian Local Development Corporation (EBALDC)	Lutheran Social Services of Northern California	St. Vincent de Paul Society
Bonita House, Inc.	East Bay Cohousing	Mayers Architecture	StopWaste.org
Branagh Inc. General Contractors	East Bay Community Recovery Project	Meta Housing	Struthers Dias Architects
BRIDGE Housing	East Oakland Community Project	Mercy Housing California	Sun Light & Power
Brown Construction	Easter Hill United Methodist Church	Merritt Community Capital Corporation	Sunseri Construction, Inc.
Build It Green	Eden Housing, Inc.	MidPen Housing Corp.	Sweetser & Newman Realty Advisors
Building Futures with Women and Children	Enterprise*	Mikiten Architecture	The Interfaith Peace Project
Byrens Kim Design Works	Episcopal Senior Communities	Mills Grove Christian Church	The John Stewart Company
Cahill Contractors, Inc.	Element Structural Engineers, Inc.	Mithun I Solomon	The Public Interest Law Project/California Affordable Housing Law Project
California Housing Partnership Corporation (CHPC)	EveryOne Home	MVE & Partners*	The San Francisco Foundation
California Reinvestment Coalition (CRC)	Federal Home Loan Bank of San Francisco	NCB Capital Impact	Transit Village Associates
CCraig Consulting	Food Bank of Contra Costa and Solano	Nehemiah Community Reinvestment Fund (NCRF)	TWM Architects + Planners
Charles Schwab Bank	Foundation for Affordable Housing	Neighborhood Housing Services of the East Bay	Union Bank
Christian Church Homes (CCH)	Fred Finch Youth Center	Nibbi Brothers General Contractors	Urban Biofilter
City of Alameda—Housing Authority	Gelfand Partners Architects	Nishkian Menninger	USA Properties Fund
City of Albany, Community Development Agency	Gonzales Architects	Non-Profit Housing Association of Northern California (NPH)	Van Meter Williams Pollack, LLP
City of Berkeley	Gubb & Barshay LLP*	North American Title Company	William Pettus, Architect
City of Concord	Habitat for Humanity East Bay/ Silicon Valley	Northern California Community Loan Fund	Walnut Creek United Methodist Church
City of El Cerrito	Housing Consortium of the East Bay (HCEB)	Northern California Land Trust	
	Heffernan Insurance Brokers*	Oakland Housing Authority	

\* EBHO greatly appreciates the support from all of our members. Many thanks to those organizations (indicated with a star) that contributed at our special membership levels!



# BEING NEIGHBORS IS MORE THAN JUST GEOGRAPHY.

**BANK OF THE WEST**  |  **BNP PARIBAS GROUP**

Member FDIC. Equal Housing Lender.  © 2015 Bank of the West.

[www.bankofthewest.com](http://www.bankofthewest.com)

## All faiths believe in human dignity. All religions believe in shelter as a basic right.

EBHO's Interfaith Communities United expresses deep gratitude to the faith communities who work with us to create access to housing for all people. In our campaigns, we are lifting up the dignity of the land and the dignity of its current and potential residents. Through faith-rooted organizing, we are making a more Sacred Bay Area for ALL of God's children.

#Sacred Land #SacredPeople



To learn more, please visit [www.EBHO.org](http://www.EBHO.org) or call 510-663-3830

## BBVA Compass

**Proud to support EBHO's  
Affordable Housing Week.**

1-800-COMPASS • [bbvacompass.com](http://bbvacompass.com)

**banking built for you.®**

Follow us on:



BBVA Compass is a trade name of Compass Bank, a member of the BBVA Group. Compass Bank, Member FDIC. Rev. 04/2015 / #2861

## Achieving great things for our community



When a group of people comes along who have the courage and vision to turn dreams into reality, they make the future bright for everyone.

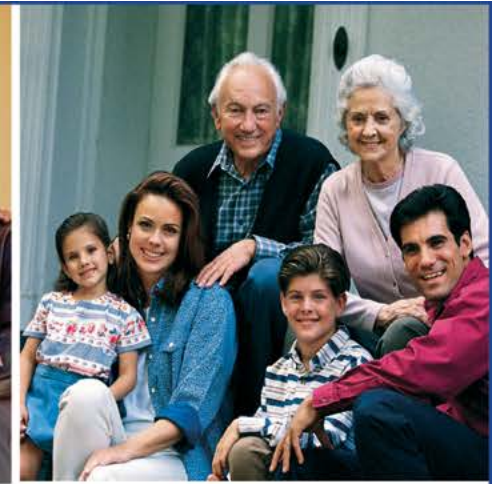
[wellsfargo.com](http://wellsfargo.com)

© 2015 Wells Fargo Bank, N.A. All rights reserved.  
Member FDIC. 121945 04/15



# Community

Partnering for the Community



U.S. Bank is proud to support East Bay Housing Organizations



At U.S. Bank, our success is directly related to the success and vitality of the communities we serve. And we believe strong communities help make a strong economy. That's why we feel it's important to partner with organizations like East Bay Housing Organizations to provide corporate leadership on issues of community importance. Because no company gains the same strength alone as it can with the help of others.

All of **us** serving you®



**usbank.com**

Member FDIC